

SW1/4 SEC.18 T.27S.R.17E. W.M.
LAKE COUNTY

27 17 18C
CHRISTMAS VALLEY

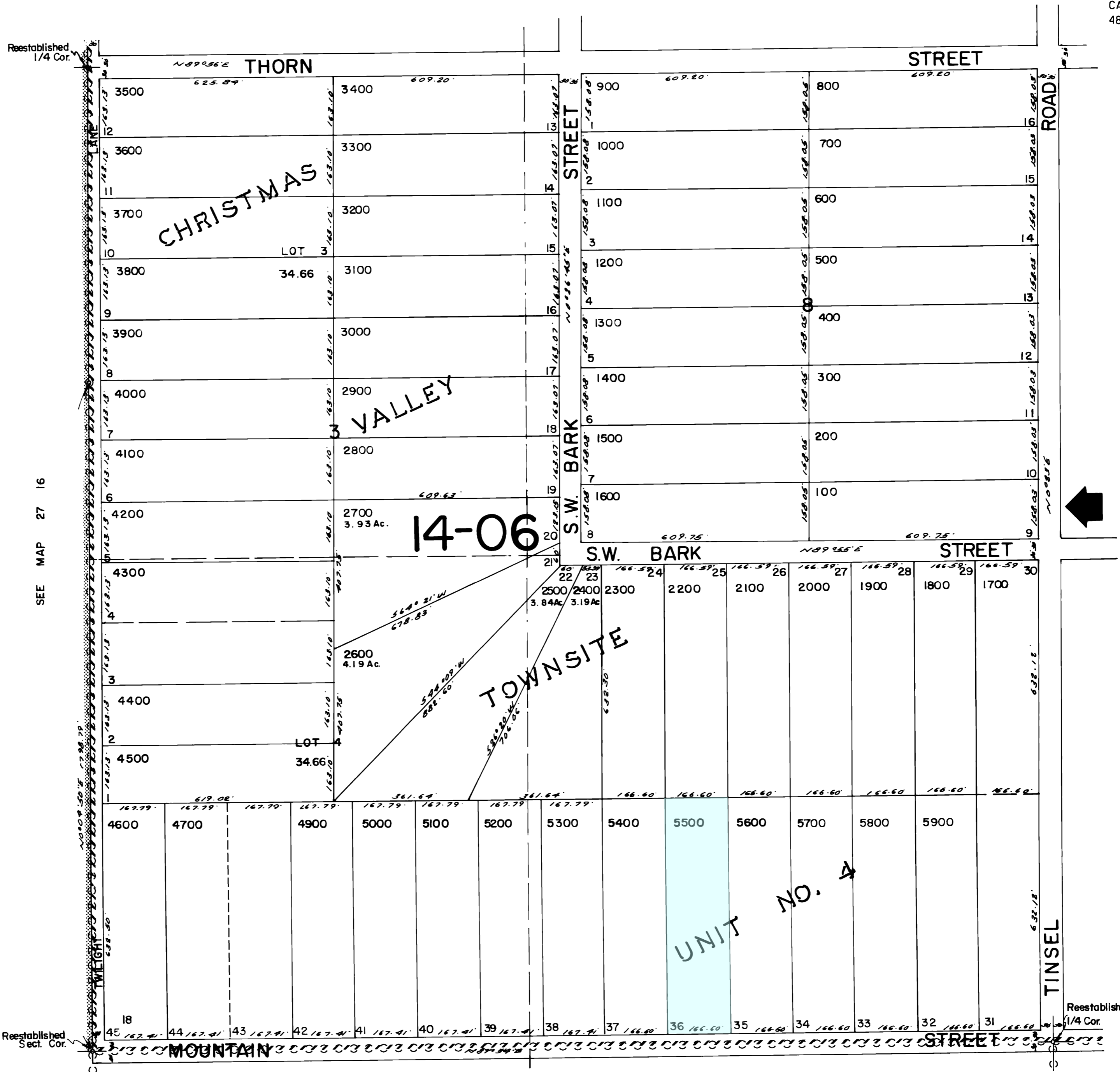
THIS MAP WAS PREPARED FOR
ASSESSMENT PURPOSE ONLY



1"=200'

SEE MAP 27 17 18B

CANCELLED NO.
4800



SEE MAP 27 16

SEE MAP 27 17 18D

19

SEE MAP 27 17 19

Revised
4/8/02, RT

27 17 18C
CHRISTMAS VALLEY